

005542

RECEIVED  
LARAMIE COUNTY  
CHEYENNE, WY.

CERTIFIED LAND CORNER RECORDATION

'86 FEB 21 PM 3 43

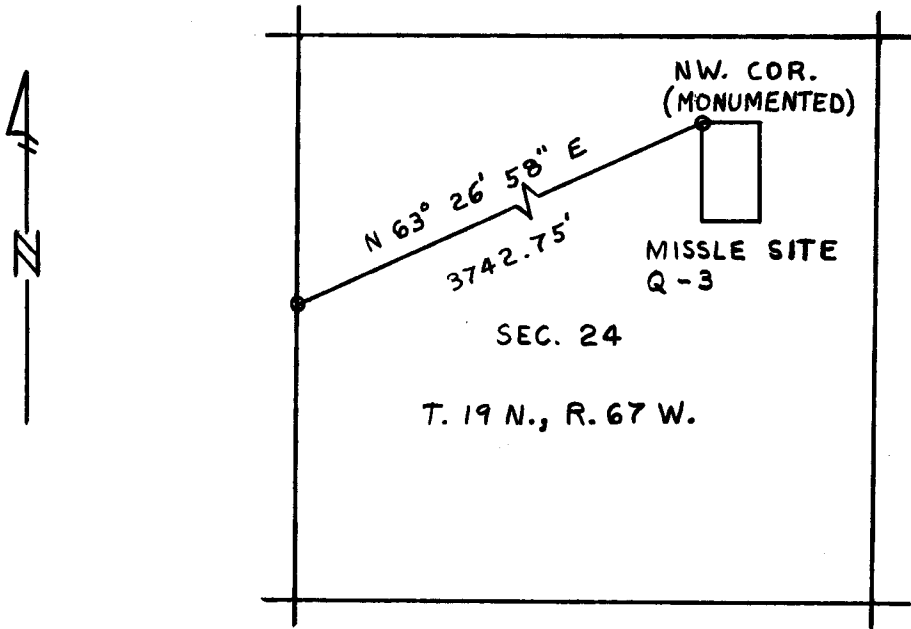
DESCRIPTION OF CORNER EVIDENCE FOUND, AND ORIGINAL RECORD (if known)

The 1/4 section corner of Sections 23 and 24, T.19N., R.67W., 6th P.M., Laramie County, Wyoming, found original monument, a limestone showing 10 x 7 x 5" above ground, firmly set and marked 1/4 on W. face.

DESCRIPTION OF MONUMENT AND ACCESSORIES ESTABLISHED TO PERPETUATE THE ORIGINAL LOCATION OF THIS CORNER:

From this corner, the NW corner of Missile Site (Q-3) bears N.63°26'58"E., 3742.75 feet distant

SKETCH, WITH COURSE AND DISTANCE TO ADJACENT CORNER IF DETERMINED IN THIS SURVEY. (May Sketch or Paste Reproduction on Reverse Side.)



Bearings determined by Solar Observation

I, Jeffrey D. Youngquist certify that I have carefully performed or reviewed the work done on the diagrammed corner as reported on this recordation form and approve the same.

Jeffrey D. Youngquist R.L.S. 3515  
Signature of Surveyor Registration No.

STATE OF WYOMING,  
Office of Clerk and Recorder,  
Laramie  
County of \_\_\_\_\_

This "corner record" was filed for record on the 21 day of Feb, 1986, was noted on the cross-index plat and is assigned page No. \_\_\_\_\_, in book No. \_\_\_\_\_.

Janet C. Whitehead  
County Official

Cross Index No. _____	T. _____	R. _____	Mer. _____
_____	T. _____	R. _____	Mer. _____
_____	T. _____	R. _____	Mer. _____
_____	T. _____	R. _____	Mer. _____
_____	T. _____	R. _____	Mer. _____
_____	T. _____	R. _____	Mer. _____
_____	T. _____	R. _____	Mer. _____

BOOK 1224

P-21 19-67

1294